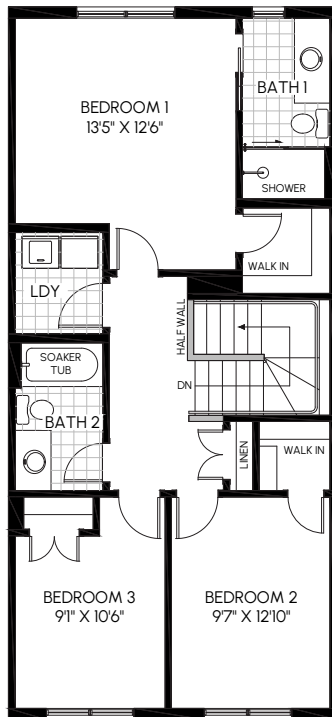
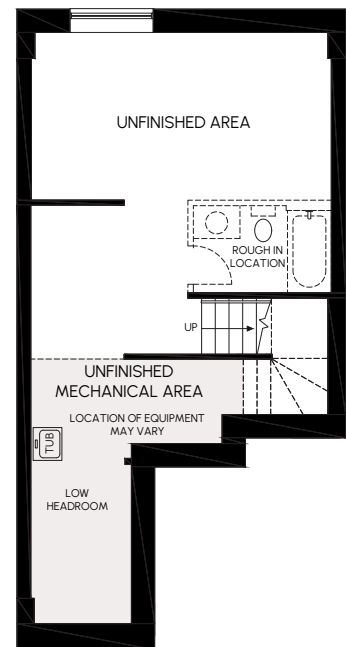


LIVING LEVEL



BEDROOM LEVEL



UNFINISHED BASEMENT

DESIGNED AND BUILT TO A HIGHER STANDARD

With Aspire, better isn't an upgrade. It's the standard. From cabinetry to lighting to core finishes, these homes are built with specifications that reflect Urbandale's commitment to quality, long-term value and everyday comfort.

- Quartz countertops throughout
- Soft-close kitchen and bath doors and drawers
- Pot lights in key living areas
- And more

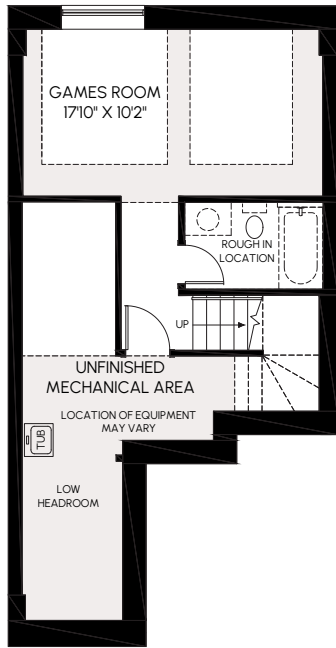


Built by Urbandale. **Aspire Series townhomes** are backed by Urbandale's long-standing reputation for building quality homes the right way. This means proven construction practices, attention to performance, and confidence that lasts long after move-in day.

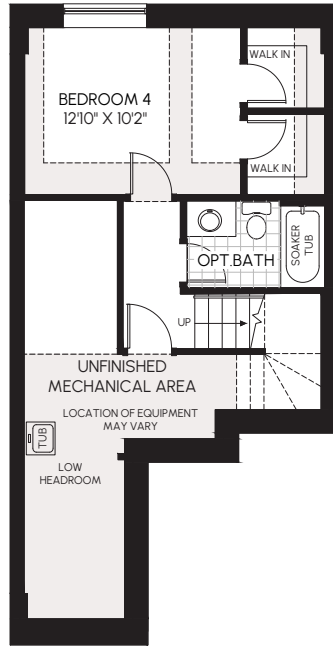
Visit our [Riverside South sales centre](#)

[urbandale.com](#)

613-822-2190



**OPTION 1: FINISHED BASEMENT
W/ GAMES ROOM + OPT. BATH
(300 SQ.FT. + 46 SQ.FT.)**



**OPT 2: FINISHED BASEMENT
W/ BEDROOM SUITE
(346 SQ.FT.)**

All dimensions are approximate. Actual usable floor space may vary from stated area. Structural/mechanical requirements may result in dimensional revisions and/or adjustments. Plans and specifications are subject to change without notice. The ENERGY STAR® for New Homes Standard is administered and promoted in Canada by Natural Resources Canada. E. & O. E.