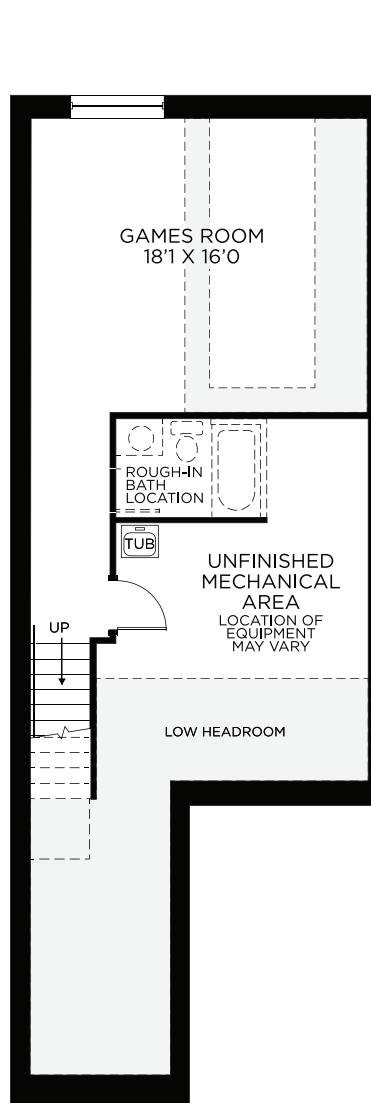


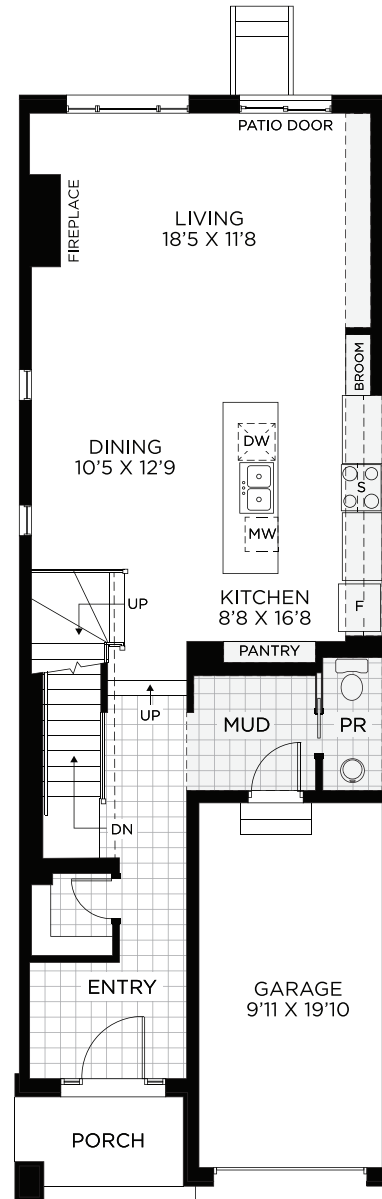
End Unit - Town

Atlantis II

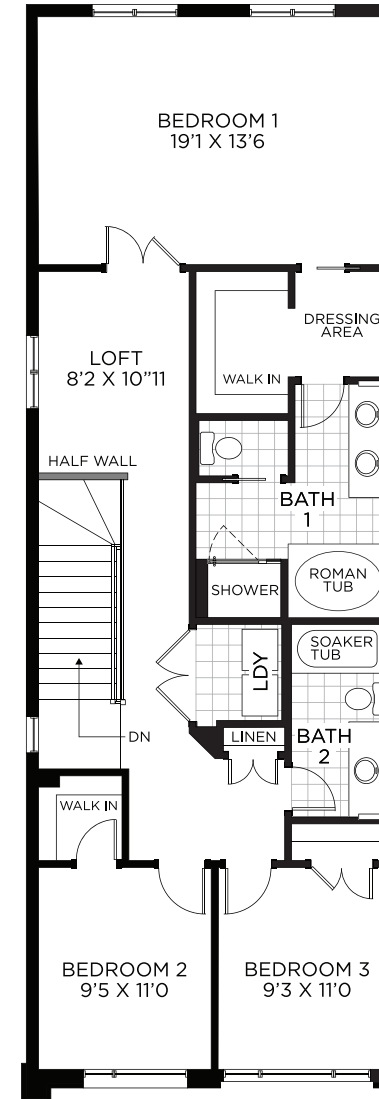
2,433 sq.ft.



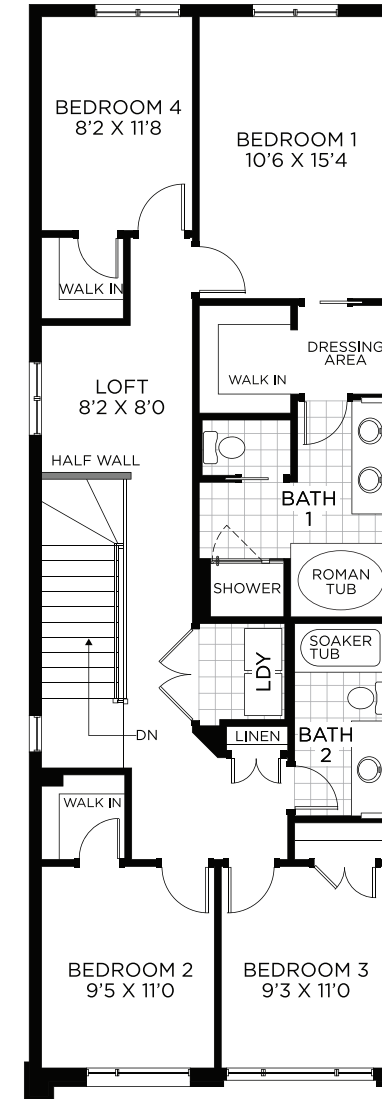
Basement
Finished Area 413 sq.ft.



Ground Floor



Bedroom Floor



OPT. Bedroom Floor
with 4 Bedrooms



All illustrations are artist concepts and should be used as references only. Plans and specifications are subject to change without notice. All dimensions are approximate. Actual usable floor space may vary from the stated area. Structural/mechanical requirements may result in bulkheads, dimensional revisions, and/or minor adjustments that follow Tarion regulations. Exterior steps and landings, including the garage, may vary with site grading. Brick sides and rears are subject to site specifications. Our homes are qualified under the CHBA's Net Zero Ready Home Labelling Program. Logo used with permission. E. & O. E. 21/01/2025

