

The Crest

NOW AVAILABLE IN RIVERSIDE SOUTH



4 BEDROOMS

2.5 BATHS

1,634 SQ. FT.

More room to grow. A smarter way to own more.

The Crest is designed for buyers who need extra space without moving up to a detached home. As a corner-end town with a full two-car garage, it offers four bedrooms, thoughtful flow, and the performance the Aspire Series is known for. This home feels substantial. And built to last.

ENERGY STAR® Certified Performance

Every Aspire townhome is ENERGY STAR® Certified, meaning it has been independently tested to meet higher standards for efficiency and overall performance.

What ENERGY STAR® Certified means for you:

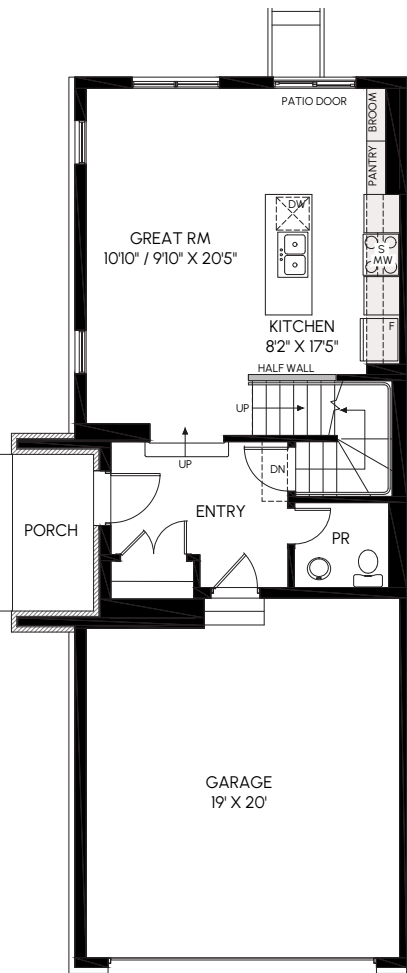
- Lower monthly energy bills
- A quieter, more comfortable interior
- More consistent temperatures throughout the home

You may not see these features. You'll feel them every day and appreciate them for years to come.

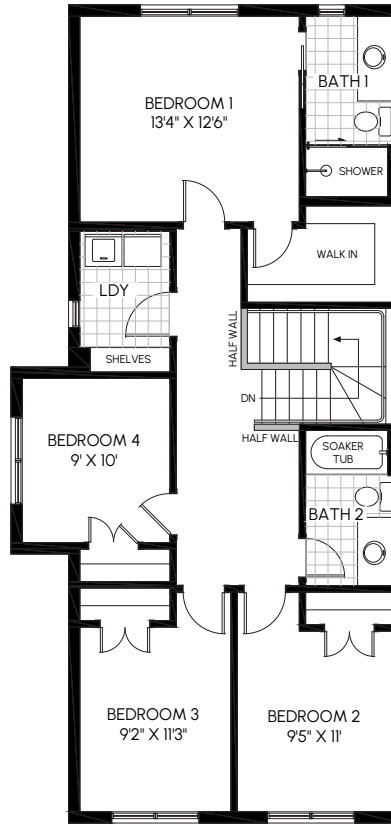


25% GREEN REBATE on Mortgage Insurance

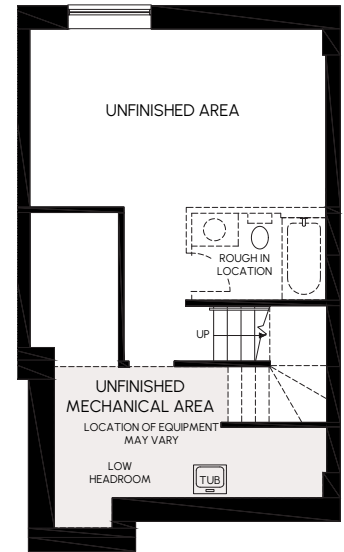
Because The Crest is ENERGY STAR® Certified, buyers may qualify for a 25% refund on their mortgage insurance premium. This is especially meaningful for first-time buyers or anyone purchasing with a 5% down payment, who must pay mortgage insurance. With 5% down payments, insurance premiums can add up quickly, and a 25% rebate can amount to thousands of dollars. Another practical way our Aspire Series delivers long-term value, right from the start.



LIVING LEVEL



BEDROOM LEVEL



UNFINISHED BASEMENT

DESIGNED AND BUILT TO A HIGHER STANDARD

With Aspire, better isn't an upgrade. It's the standard. From cabinetry to lighting to core finishes, these homes are built with specifications that reflect Urbandale's commitment to quality, long-term value and everyday comfort.

- Quartz countertops throughout
- Soft-close kitchen and bath doors and drawers
- Pot lights in key living areas
- And more

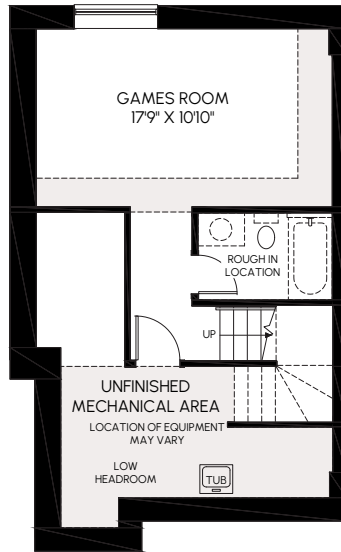


Built by Urbandale. **Aspire Series townhomes** are backed by Urbandale's long-standing reputation for building quality homes the right way. This means proven construction practices, attention to performance, and confidence that lasts long after move-in day.

Visit our [Riverside South sales centre](#)

[urbandale.com](#)

613-822-2190



**OPT 1: FINISHED BASEMENT
W/ GAMES ROOM + OPT. BATH
(309 + 45 SQ.FT.)**

All dimensions are approximate. Actual usable floor space may vary from stated area. Structural/mechanical requirements may result in dimensional revisions and/or adjustments. Plans and specifications are subject to change without notice. The ENERGY STAR® for New Homes Standard is administered and promoted in Canada by Natural Resources Canada. E. & O. E.