

The Bloom

NOW AVAILABLE IN RIVERSIDE SOUTH



4 BEDROOMS

2.5 BATHS

1,771 SQ. FT.

A little more room. A little more versatility.

The Bloom offers the flexibility modern families need, with four bedrooms, a bright loft, and a ground-floor flex area that adapts easily to work, study, or everyday living. Designed with comfort and flow in mind, this **Aspire Series** end unit combines generous space with the thoughtful performance Urbandale is known for.

ENERGY STAR® Certified Performance

Every **Aspire** townhome is **ENERGY STAR® Certified**, meaning it has been independently tested to meet higher standards for efficiency and overall performance.

What ENERGY STAR® Certified means for you:

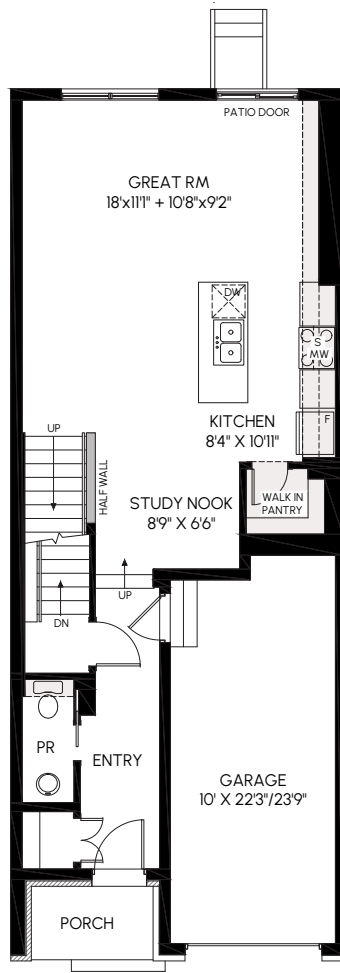
- Lower monthly energy bills
- More consistent temperatures throughout the home
- A quieter, more comfortable interior

You may not see these features. You'll feel them every day and appreciate them for years to come.

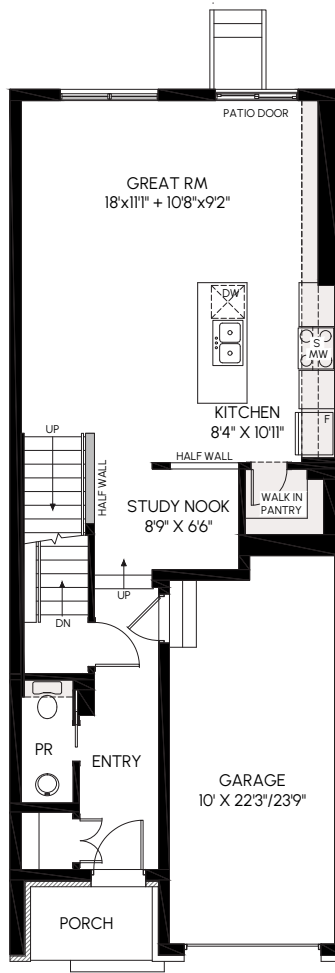


25% GREEN REBATE on Mortgage Insurance

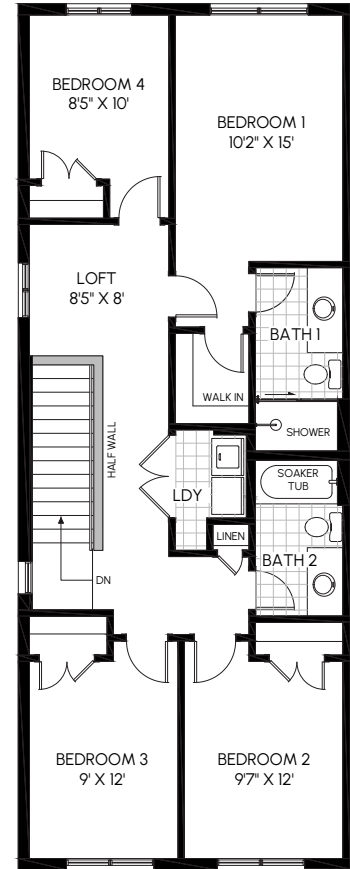
Because **The Bloom** is **ENERGY STAR® Certified**, buyers may qualify for a 25% refund on their mortgage insurance premium. This is especially meaningful for first-time buyers or anyone purchasing with a 5% down payment, who must pay mortgage insurance. With 5% down payments, insurance premiums can add up quickly, and a 25% rebate can amount to thousands of dollars. Another practical way our **Aspire Series** delivers long-term value, right from the start.



LIVING LEVEL



OPTION LIVING LEVEL
W/ ENCLOSED STUDY



BEDROOM LEVEL

DESIGNED AND BUILT TO A HIGHER STANDARD

With Aspire, better isn't an upgrade. It's the standard. From cabinetry to lighting to core finishes, these homes are built with specifications that reflect Urbandale's commitment to quality, long-term value and everyday comfort.

- Quartz countertops throughout
- Soft-close kitchen and bath doors and drawers
- Pot lights in key living areas
- And more

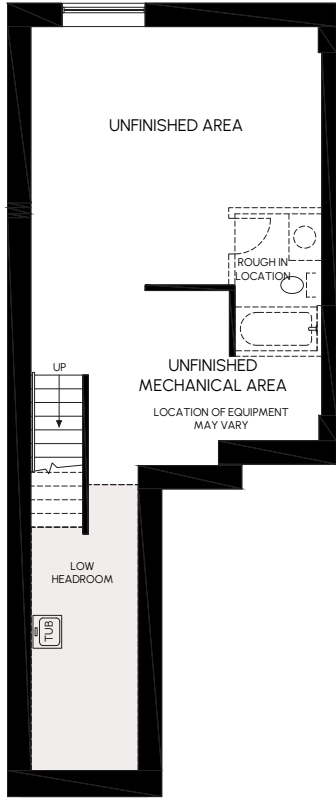


Built by Urbandale. **Aspire Series townhomes** are backed by Urbandale's long-standing reputation for building quality homes the right way. This means proven construction practices, attention to performance, and confidence that lasts long after move-in day.

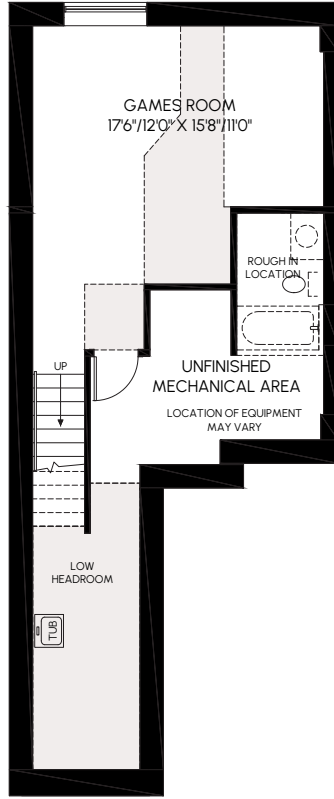
Visit our [Riverside South sales centre](#)

[urbandale.com](#)

613-822-2190



UNFINISHED BASEMENT



**OPT 1: FINISHED BASEMENT
W/ GAMES RM + OPT BATH
(332+45 SQ.FT.)**

All dimensions are approximate. Actual usable floor space may vary from stated area. Structural/mechanical requirements may result in dimensional revisions and/or adjustments. Plans and specifications are subject to change without notice. The ENERGY STAR® for New Homes Standard is administered and promoted in Canada by Natural Resources Canada. E. & O. E.