

# The Spark

NOW AVAILABLE IN RIVERSIDE SOUTH



3 BEDROOMS

2.5 BATHS

1,495 SQ. FT.

A little more space. A little more flexibility. A smart step for the future.

The Spark is designed for buyers who want more than just a starting point. It offers the comfort, performance, and thoughtful design the **Aspire Series** is known for, in a layout that flows easily from everyday living to entertaining. This is a home built for living. And built to last.

### **ENERGY STAR® Certified Performance**

Every **Aspire townhome** is **ENERGY STAR® Certified**, meaning it has been independently tested to meet higher standards for efficiency and overall performance.

### **What ENERGY STAR® Certified means for you:**

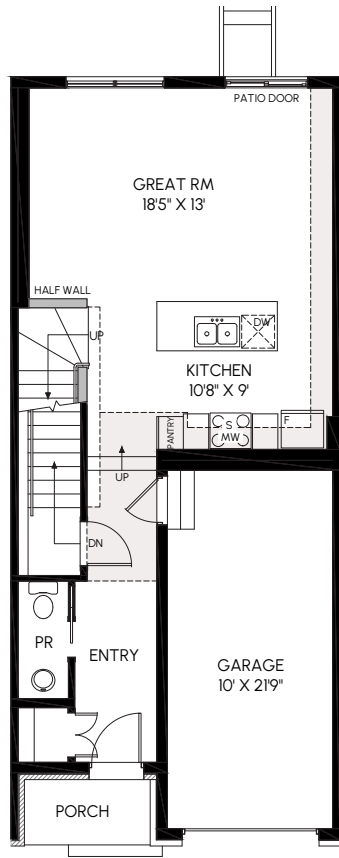
- Lower monthly energy bills
- A quieter, more comfortable interior
- More consistent temperatures throughout the home

*You may not see these features. You'll feel them every day and appreciate them for years to come.*

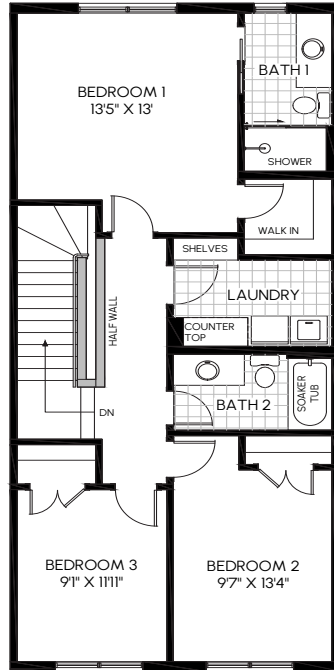


### **25% GREEN REBATE on Mortgage Insurance**

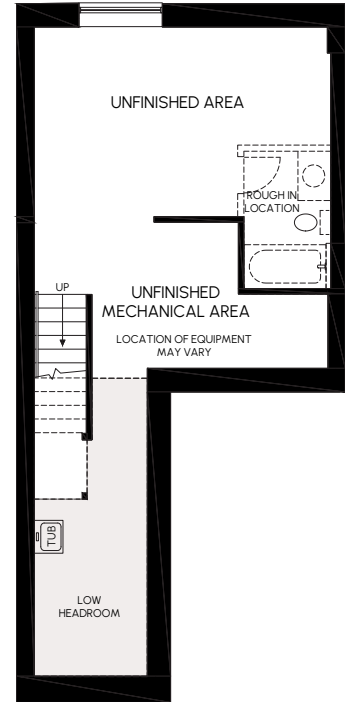
Because **The Spark** is **ENERGY STAR® Certified**, buyers may qualify for a 25% refund on their mortgage insurance premium. This is especially meaningful for first-time buyers or anyone purchasing with a 5% down payment, who must pay mortgage insurance. With 5% down payments, insurance premiums can add up quickly, and a 25% rebate can amount to thousands of dollars. Another practical way our **Aspire Series** delivers long-term value, right from the start.



LIVING LEVEL



BEDROOM LEVEL



UNFINISHED BASEMENT

## DESIGNED AND BUILT TO A HIGHER STANDARD

With Aspire, better isn't an upgrade. It's the standard. From cabinetry to lighting to core finishes, these homes are built with specifications that reflect Urbandale's commitment to quality, long-term value and everyday comfort.

- Quartz countertops throughout
- Soft-close kitchen and bath doors and drawers
- Pot lights in key living areas
- And more

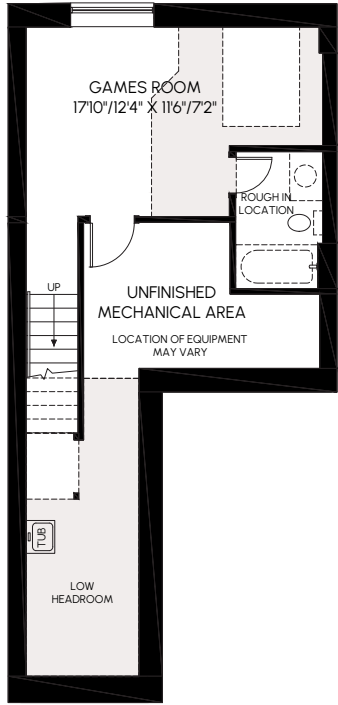


Built by Urbandale. **Aspire Series townhomes** are backed by Urbandale's long-standing reputation for building quality homes the right way. This means proven construction practices, attention to performance, and confidence that lasts long after move-in day.

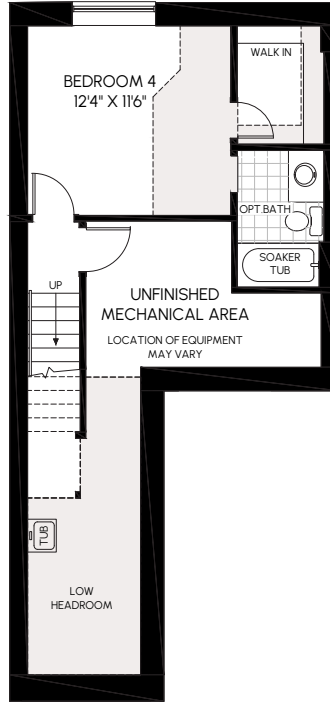
Visit our [Riverside South sales centre](#)

[urbandale.com](#)

613-822-2190



**OPT 1: FINISHED BASEMENT W/  
GAMES RM + OPT BATH  
(250 SQ.FT.+48 SQ.FT.)**



**OPT 2: FINISHED BASEMENT  
W/ BEDROOM SUITE  
(346 SQ.FT.)**

All dimensions are approximate. Actual usable floor space may vary from stated area. Structural/mechanical requirements may result in dimensional revisions and/or adjustments. Plans and specifications are subject to change without notice. The ENERGY STAR® for New Homes Standard is administered and promoted in Canada by Natural Resources Canada, E. & O. E.