

The Origin

NOW AVAILABLE IN RIVERSIDE SOUTH



3 BEDROOMS | **2.5 BATHS** | **1,448 SQ. FT.**

A smart beginning. Designed to grow with you.

The Origin delivers efficient, comfortable living with an open main floor and a spacious kitchen offering ample storage and prep space. Three well-proportioned bedrooms, including a primary with a walk-in closet and ensuite, provide flexibility for family, guests, or a home office. Thoughtful details support easy, everyday living, like all the **Aspire Series** models.

ENERGY STAR® Certified Performance

Every **Aspire townhome** is **ENERGY STAR® Certified**, meaning it has been independently tested to meet higher standards for efficiency and overall performance.

What ENERGY STAR® Certified means for you:

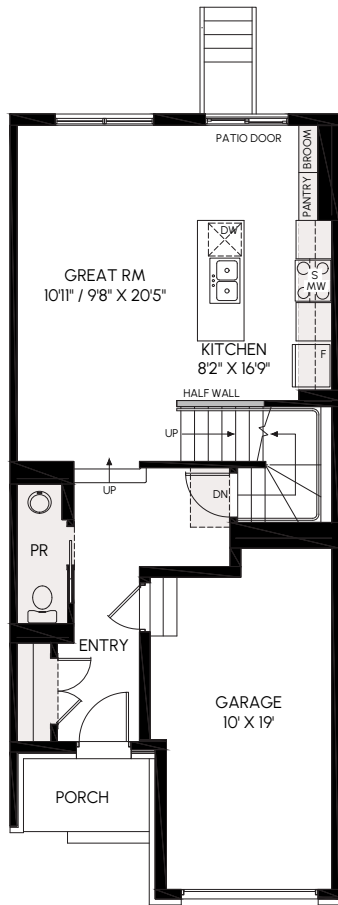
- Lower monthly energy bills
- More consistent temperatures throughout the home
- A quieter, more comfortable interior

You may not see these features. You'll feel them every day and appreciate them for years to come.

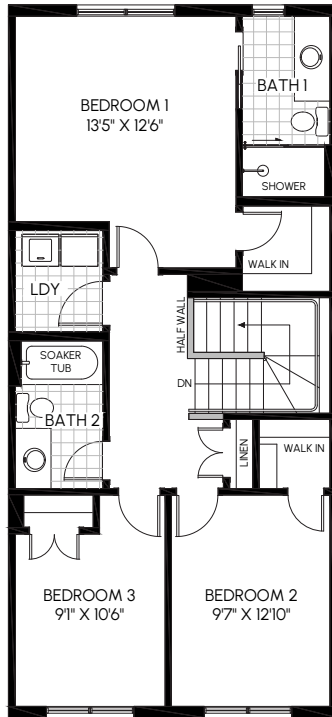


25% GREEN REBATE on Mortgage Insurance

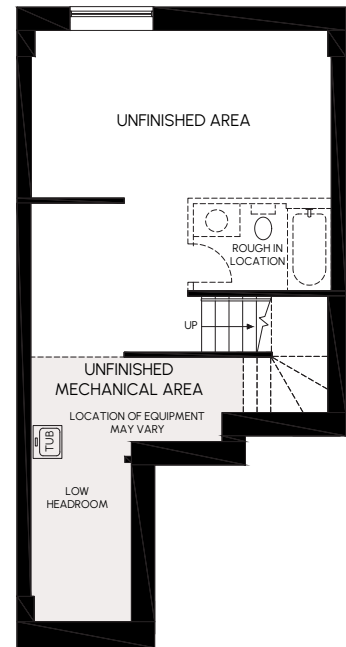
Because **The Origin** is **ENERGY STAR® Certified**, buyers may qualify for a 25% refund on their mortgage insurance premium. This is especially meaningful for first-time buyers or anyone purchasing with a 5% down payment, who must pay mortgage insurance. With 5% down payments, insurance premiums can add up quickly, and a 25% rebate can amount to thousands of dollars. Another practical way our **Aspire Series** delivers long-term value, right from the start.



LIVING LEVEL



BEDROOM LEVEL



UNFINISHED BASEMENT

DESIGNED AND BUILT TO A HIGHER STANDARD

With Aspire, better isn't an upgrade. It's the standard. From cabinetry to lighting to core finishes, these homes are built with specifications that reflect Urbandale's commitment to quality, long-term value and everyday comfort.

- Quartz countertops throughout
- Soft-close kitchen and bath doors and drawers
- Pot lights in key living areas
- And more

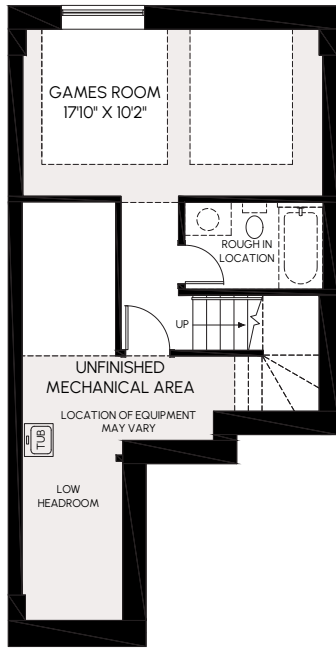


Built by Urbandale. **Aspire Series townhomes** are backed by Urbandale's long-standing reputation for building quality homes the right way. This means proven construction practices, attention to performance, and confidence that lasts long after move-in day.

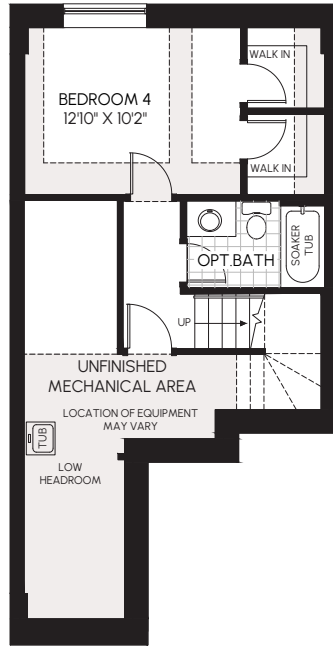
Visit our [Riverside South sales centre](#)

urbandale.com

613-822-2190



**OPTION 1: FINISHED BASEMENT
W/ GAMES ROOM + OPT. BATH
(300 SQ.FT. + 46 SQ.FT.)**



**OPT 2: FINISHED BASEMENT
W/ BEDROOM SUITE
(346 SQ.FT.)**

All dimensions are approximate. Actual usable floor space may vary from stated area. Structural/mechanical requirements may result in dimensional revisions and/or adjustments. Plans and specifications are subject to change without notice. The ENERGY STAR® for New Homes Standard is administered and promoted in Canada by Natural Resources Canada. E. & O. E.