

GALILEO

346 Whitham Crescent, Kempville



Move-In Ready Townhome

- Interior Unit
- Relocated fireplace
- 3x5 shower in Bath 1
- Upgraded under cabinet lighting to LED puck lights in Kitchen
- Upgraded quartz countertop in Kitchen
- Upgraded sinks in Bath 1 and Bath 2

The Creek

Lot 42 / Block 10 / Phase 1

3 Bedroom and 2.5 Bath with 3pc Ensuite
Layout

1,087 SQ FT

Basement - Finished Area xxx SQ FT

\$596,900

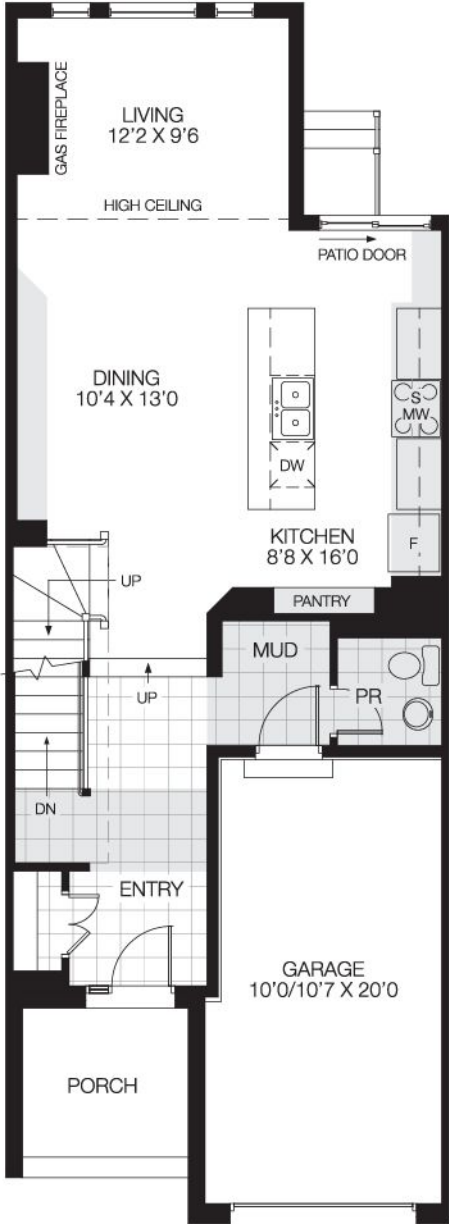
Contact

Morgan Patmore - Sales Consultant

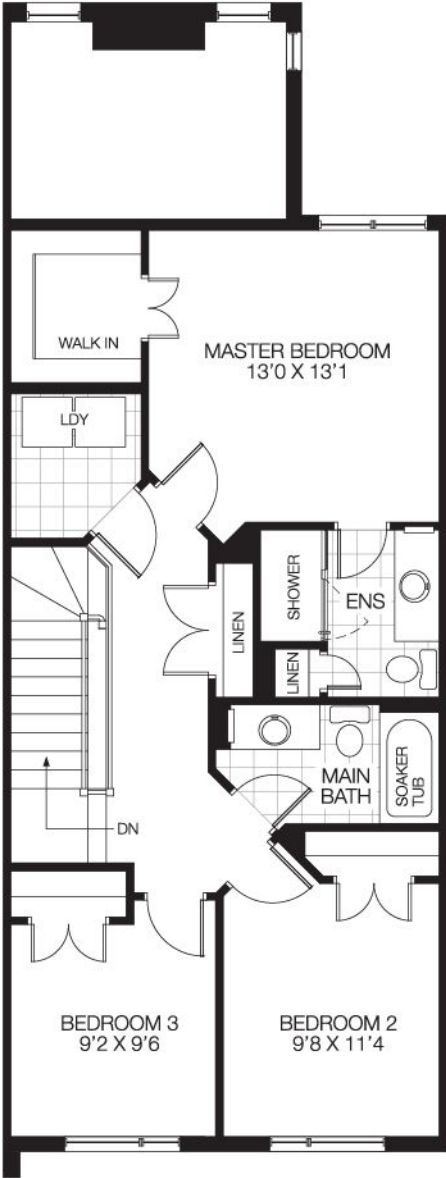
thecreek@urbandale.com

613-695-3011

GROUND FLOOR



BEDROOM FLOOR



BASEMENT FLOOR

