

TEMPLETON PACIFIC

1135 Kitigan Grove, Kanata



Move-In Ready Single

- Hardwood stairs from main floor to bedroom floor
- Finished games room in basement
- 3' x 4' shower in Bath 1 with a glass return panel between shower and freestanding tub
- Additional pot lights in great room

\$15K Design Centre Bonus

Kanata Lakes

Phase 9 / Lot 132 / 31 Ft Lot

4 Bedroom and 2.5 Bath Layout

1,998 SQ FT

\$999,900

Contact

Leigh-Ann Shearer - Sales Consultant

kanatalakes@urbandale.com

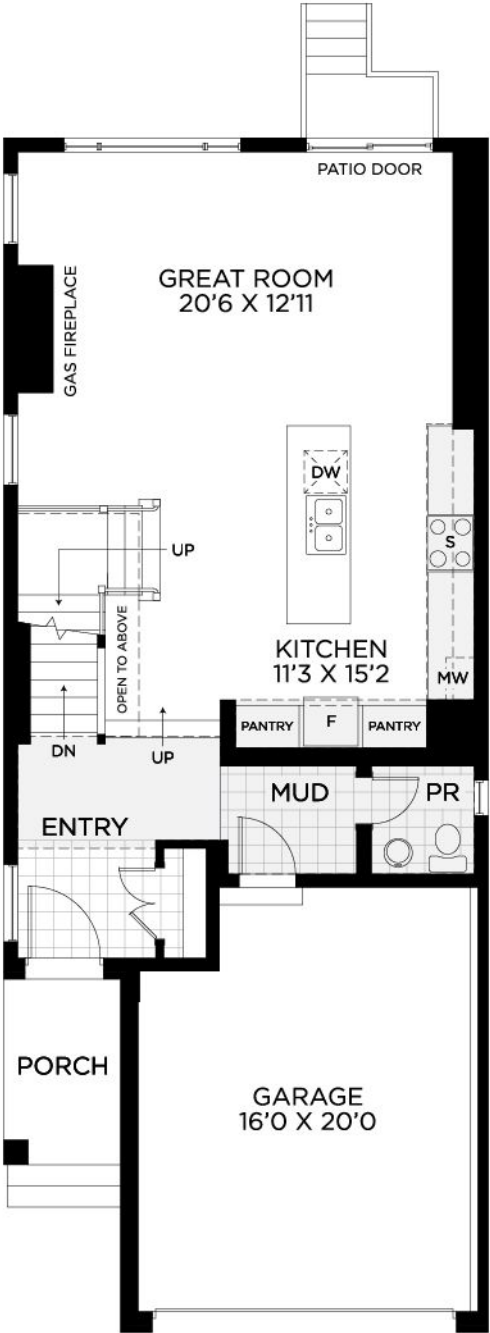
613-822-2190

Net-Zero Ready

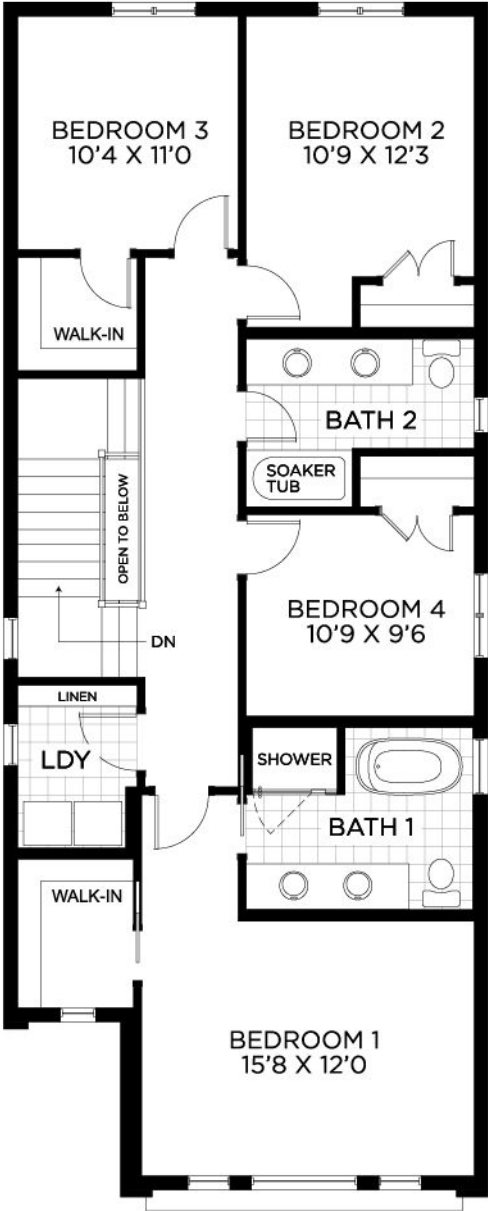
Your new home features Urbandale's Solar Energized Package: A 5 Kilowatt Rooftop Solar Panel System.

In addition to solar panels and a 200 amp service, your Urbandale home will feature a system of standard features and third party certification designed to enhance comfort and efficiency.

GROUND FLOOR



BEDROOM FLOOR



BASEMENT

