

# CALYPSO

248 Bliss Crescent, Stittsville



## Bradley Commons

Phase 4 / Lot 45 / Block 5

3 Bedroom and 2.5 Bath Layout

1,809 SQ FT

Basement - Finished Area 289 SQ FT

~~\$773,900~~ **\$748,900**

## Contact

Leigh-Ann Shearer - Sales Consultant

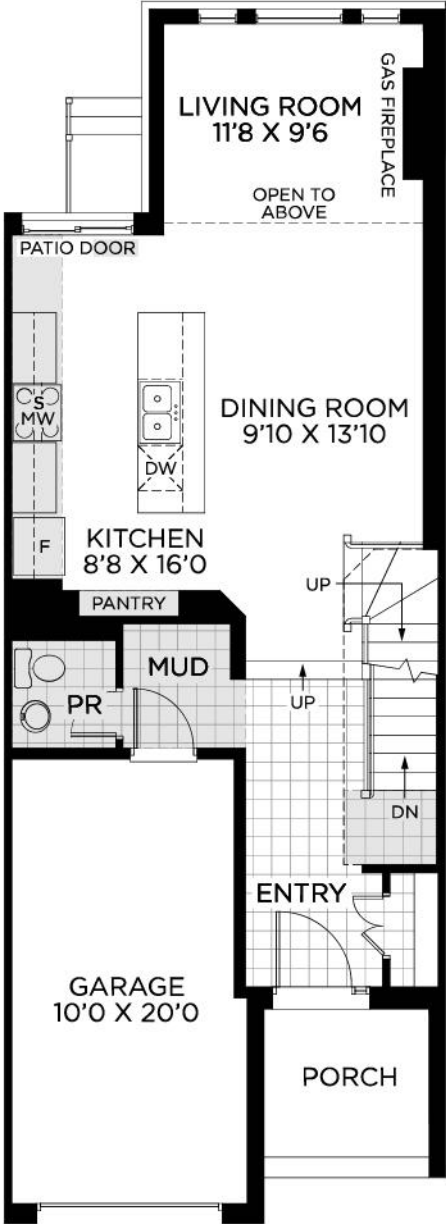
[bradleycommons@urbandale.com](mailto:bradleycommons@urbandale.com)

613-822-2190

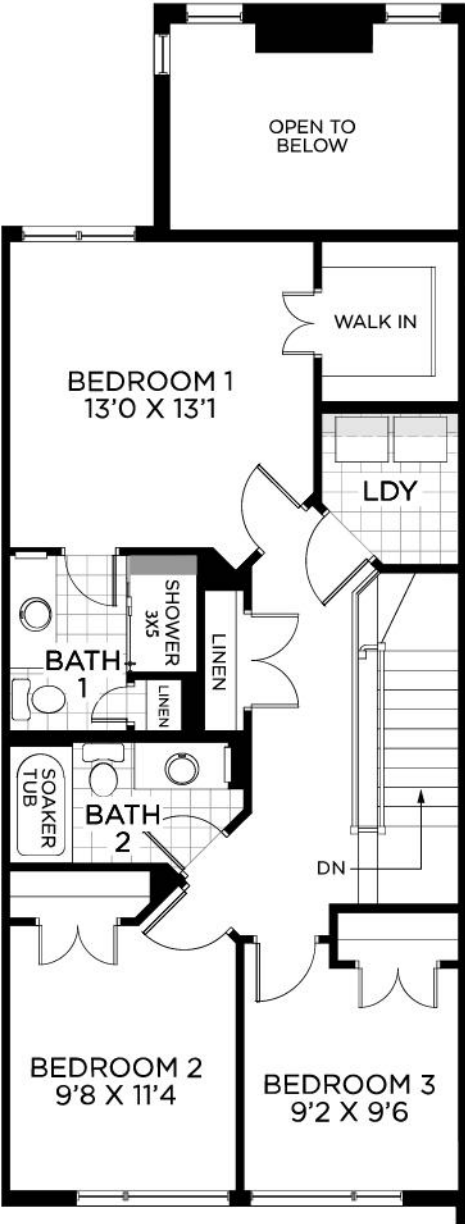
## Move-In Ready Townhome

- Interior Unit
- Optional Layout with relocated fireplace and 3pc ensuite with a larger Bedroom 1
- Model Home with designer curated finishes
- Light fixtures included
- Appliances included
- Window coverings included
- Hardwood staircases with black metal spindles, painted white risers and stringers
- 3' x 5' tiled shower with bench and build-in shower niche in Bath 1
- 7 1/2" Urban Loft White Oak-Fifth Ave engineered hardwood throughout the main floor, bedroom floor hallway and Bedroom 1
- Upgraded cabinetry throughout including glass uppers in kitchen, custom wine rack and additional pots and pans drawers
- Upgraded hood fan
- Custom built-in shelving in Mudroom

# GROUND FLOOR



# BEDROOM FLOOR



# BASEMENT

